

SYDNEY SHELLER

Newsletter of the Shell Club of Sydney
NSW Branch, The Malacological Society of Australasia Limited ACN 067 894 848

Shell Club of Sydney Mission Statement:

To appreciate, understand and preserve shells and their environment and to share this with others.

Next Meeting:

Date: 23rd October 99
(normally 4th Saturday)

Location: Ryde Eastwood
Leagues Club
117 Ryedale Rd
West Ryde

Time: 1.30 for 2.00pm

Seminar: Sydney Shell Club
Shell Show



Cypraea leucodon, Balute Is.
Hexaplex cichoreum, Cebu Courtesy Nep

Contributions:

Please send contributions to:
Steve Dean
166 Narrabeen Park Parade,
Mona Vale NSW 2103
Photos, and disc files of articles by mail,
or preferably by email to
steve@easy.com.au

If you cannot get your text onto disc,
then **Karen Wadwell** may be prepared
to type it for you - send material to:
1/7-9 Severn St
Maroubra NSW 2035

Office - Bearers:

President: Patty Jansen
Vice Pres: Des Beechey
Secretary: Chris Barnes
Treasurer: Peter Pienaar
Sheller Editor: Steve Dean
Meeting Raffles: Maureen Anderson
The executive plans field trips.

Some of the topics

- Scallop season in
- *Cymatium armatum*
- *Gourmya gourmy*
- Mollusc Auctions
- Interstate NSW Shell Club members
- Puzzles, Gossip and Classifieds

SCALLOP SEASON NOW OPEN IN TASMANIA

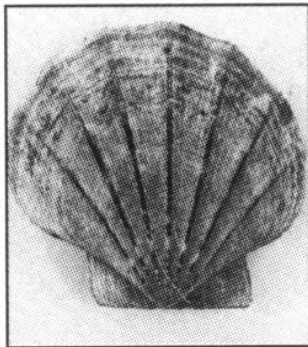
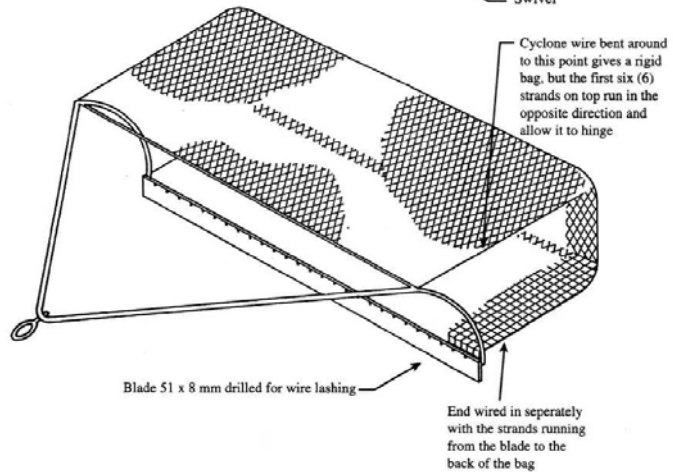
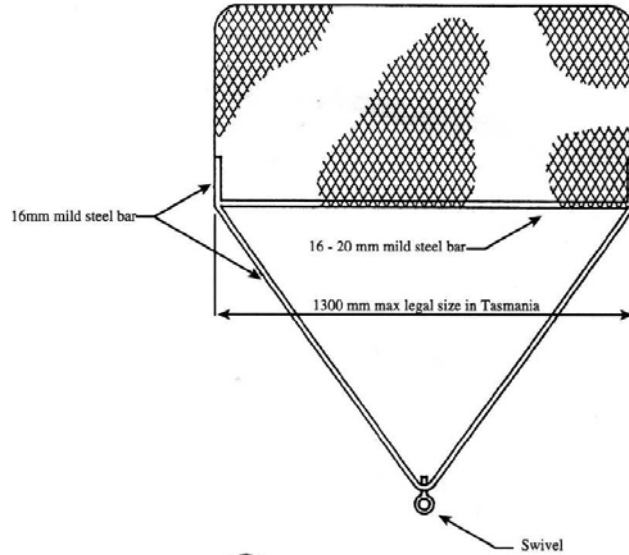
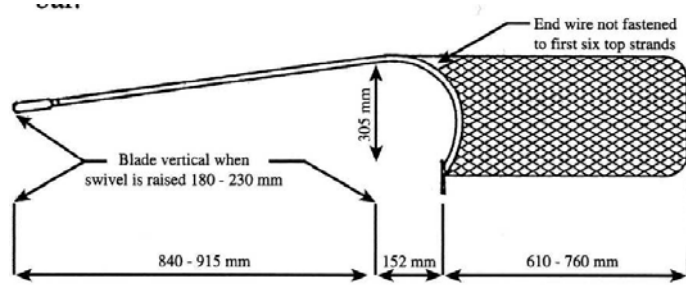
By Des Beechey

There are three types of scallops fished commercially in Tasmania. The queen scallop (*Pecten bifrons*), the doughboy scallop (*Pecten asperrimus*) and the commercial scallop (*Pecten meridionalis*). The most important one in Tasmania is the commercial scallop. The doughboy scallop is more commonly taken in Victoria, and the queen scallop is South Australia.

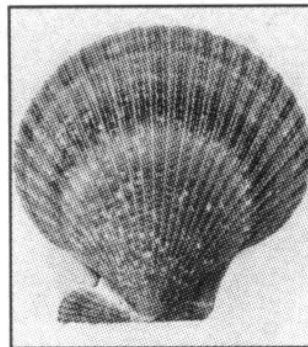
Scallops are taken by dredge - a dredge about two metres wide is towed behind a boat. The dredge pulls up a lot of other things apart from scallops, and destroys a lot of living things on the seabed. The best scallop areas in Tasmania, around the mouth of the Derwent River at Hobart were fished out long ago, and have to be given period closed periods for stocks to recover.

Recreational scallop dredging is allowed in Tasmania. The season is open from 15 June 99 to 30 October 99. You have to apply for a licence, and you are limited to a take of 100 per day. There is a minimum legal size set; 100 mm for queen, 80 mm for commercial and doughboy.

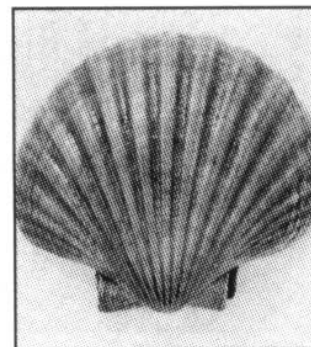
Does anyone know where the common name of 'doughboy' for *Pecten asperrimus* came from?



Queen



Doughboy



Commercial

Mollusc auctions

In Our August meeting we had two unexpected visitors from USA. Bret Raines (see picture) and Kim Hutsell. They had been in Australia on a field trip off the Queensland coast, with about 20 other people from around the world, including two from our club.

Kim is a field researcher in marine malacology based out of San Diego. He was impressed with our Sydney Sheller and has become a member so he can receive copies.

Bret collects Pectinidae. He describes himself as a "pecten nut". While in the military, he was stationed at or travelled to Alaska, Australia, Florida, Guam, Hawaii, Japan, Korea, Okinawa, Philippines and Truk. He is currently an environmental project manager for the US federal government and lives in a 'one horse' town in the desert, not so good for shell collecting.



Bret runs an on line shell auction on his comprehensive web site.
<http://www.molluscs.net>

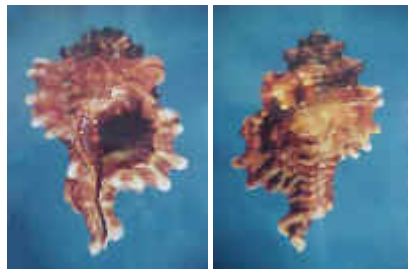
The web site also includes a chat forum, answering questions. A couple of recent questions were about cleaning and preserving echinoderms. The answers recommend bleach diluted to 10% of household strength for a short time if removing spines. No longer than 15min – 1hr to avoid the plates separating. Then strengthen the shell without changing its appearance by soaking it in glue (Elmers Glue or Sobo glue diluted with water – 10% for sand dollars, 20-25% for urchins, then allowing to dry on a non-stick surface such as grease paper. Full strength glue can be used inside)

I wonder what Ashley our resident echinoderm expert would say about the glue?



Cymatium armatum (Sowerby, 1897)

July 1999
By Vincent CRAYSSAC



October the 20th, 1996, another specimen of *C. armatum* was found, live, near Noumea. So far, about ten specimens have been found in various localities situated from North Queensland, Australia up to Vanuatu. From that recent finding, we can now add New Caledonia as a new range extension of that very rare specie of *Cymatium*.

Very little is known actually about that species, due to the very low number of specimens found so far. However, from that new New-Caledonian specimen, which measures 82.7mm in length, its general description can be determined as follows:

General brownish orange background colour, with some paler areas and some almost whitish nodules on the varices situated on the last whorl. We can also notice, numerous varices crossed by ribs. The siphonal canal is twisted, the columella streaked with dark brown.

There are sixteen whitish folds and the outer lip has eleven. The edge is sculptured with 6 digitations.

The 2 specimens collected in New-Caledonia so far, have been found in very shallow water, 1m - 3m, in muddy/sandy bottoms. Apparently specimens have been found both in the south west, near Noumea and in the north east, near Ballade, Maat bay which would tend to suggest that we may find that superb rarity everywhere around New-Caledonia.

Gourmya gourmyi (Crosse, 1861)

August 1999
By Vincent CRAYSSAC



First of all, from the study of the radula and operculum by Houbrick, 1981, we can include *Gourmya* as a valid genus in the family Cerithiidae.

Gourmya gourmyi is a rare, relatively large, and very distinctive prosobranch that lives subtidally from 5m up to 30m on rocky substrata associated with coral reefs drop-offs. Living animals are collected clinging tightly to algae-covered rocky surface along high-energy reef slopes. We can find it only in a restricted part of the southwest pacific. More precisely around New-Caledonia up to Chesterfields Islands.

The shell is still largely ignored by both collectors and scientists, as very few specimens are represented in museums or in the collections in general.

The unusual, centrally placed anterior siphonal canal and the large ovate aperture with hooklike extension of the outer lip over the siphonal canal allow

the shell to withdraw its head and clampdown on the rock without any gaps

between the aperture edge and the foot. Communication with the external environment is maintained via the siphonal canal by means of the siphonal ocelli and sensory receptors of the siphonal mantle edge. The thickened varix along the outer lip served to strengthen the body whorl and protects the snail from crushing predators.

Stomach anatomy and contents studied, plus the radular ribbon, suggest that *Gourmya* is a grazer of coarse algal substrates. Nothing is known of its reproductive biology, spawn or larvae.

Most Cerithiids live in subtidal or intertidal shallow water environments where they have undergone extensive adaptive radiations into sandy limons, grass beds and the rocky intertidal. The environmental niche of *Gourmya*, high-energy outer reef drop-offs, is unusual and may explain why the group never became as geographically widespread as other Cerithiids. In terms of species numbers, and compared to the other large Cerithiid groups, the genus was not a successful group.

Interstate NSW Shell Club membership increasing

The Sydney shell club welcomes new members. Our \$15 membership entitles you to receive this publication, for as many issues happen to be produced in a calendar year (maximum 10).

Following are excerpts from a letter received from a new Sydney Shell Club member, joining this month. It may encourage others to think about joining:

"Thank you for sending the latest issue of the Sydney Sheller to the WA Shell Club. Your publication has certainly undergone some positive changes in the last year, and I would like to encourage you to keep up the good effort.....

The reason I am writing is to join the Sydney Shell Club to receive your newsletters and hopefully make contact with Sydney members. I am a member of the MSA and have enclosed \$15....

Also do you have back issues for the last year, if so could you please send them and invoice me....

I am the editor of the WA Shell Collector so you can send my copy along with the one for the club.....

Is it possible to mail the Sydney Sheller without folding it?....

Ben Schneider

Sydney Sheller editor's response:

I can produce additional copies of all issues of the Sheller since I took over the task in July 1998, except possibly for one colour plate in that first issue. (The colour brightness may not be exact on one or two pages in other issues). This assumes I get the time to produce additional copies.

If anyone needs back copies, please let me know now and I will attempt to print a batch in the next few months. – send enough money for the issues plus postage and it will eventually happen. (for all available back issues from July 1998 to the end of 1999 \$28 should cover the costs)

I will investigate the increased costs associated with postage without folding.

Steve Dean

<u>Month/ Year</u>	<u>Meeting Speaker</u>	<u>Proposed Subject</u>
October 99	Ron Moylan	Annual Shell Show
November 99	Peter Middlefart	Thai mollusca
December 99	Christmas	Christmas Trip
January 2000	Stephanie Clark	Shell Quiz
February 2000	Chris Barnes	Cypraeidae of Little Bay
March 2000	Meeting cancelled/postponed	Third national shell show
April 2000	John Dunkerley	To be announced
May 2000	TBA	TBA

Natural History Books*Capricornica Publications*

Shell books from around the globe
Free catalogue

P.O. Box 345
Lindfield NSW 2070

ph/fax: 02 9415 8098
E-mail: capric@capricornica.com
Web: <http://www.capricornica.com>

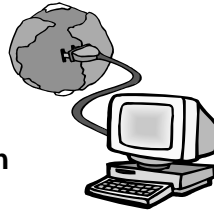
Easynet

Personal email address,
accessible anywhere in the world

and/or
**5MB for your
web pages**

\$6 per month
Call Steve Dean

02 94379290w steve@easy.com.au

**Ernie's Sea Shells**

Specimen
Commercial
Buy, Swap and Sell
Worldwide

Ernie Uhle
02 9829 2226

Ron Moylan

Solomon Island

Specimen Shells

02 9949 4241 Tel.

02 9907 9523 Fax.

David Tarrant

Specimen & Commercial Shells

Retail & Wholesale

Stock includes representatives of
most families. No lists at present.

4 Gillies Close
Coffs Harbour 2450

02 6652 6104

Members News, & Buy, Swap & Sell:

Wanted contributions to this classified section of the sheller. Please get contributions to Steve Dean or Karen Wadwell if typing is required (See front cover for contact details)

Wanted gossip for this section of the sheller. Please get contributions to Steve Dean or Karen Wadwell.

Fort Denison Low tides:
September daytime low tides:

8	1326	.3
9	1408	.3
10	1447	.3
11	1527	.3
23	1248	.3
24	1336	.2
25	1426	.1
26	1516	.1
27	1611	.1
28	1708	.2
29	1810	.2
30	1917	.3

Next year the annual shell show will be in Adelaide, 25th to 26th March

For Sale:

- One valve of a giant clam 2 ft long, old but in good condition - price \$400
- A comprehensive Tibia collection - price negotiable

Contact Ashley Miskelly

The next New Zealand National Shell Show will be held in Auckland on Labour Weekend 27 - 30th October 2000. Friday 27th Oct. will be the set up day and the show will open for the following three days. Organised by Peter Poortman with support from Kevin Burch and the committee, any ideas and suggestions should be directed to Peter at (09) 817 5697 or poortman@xtra.co.nz

Dear shell collector,
My name is Donald Chan. I am a shell dealer living in Hong Kong. I just completed my first list of shells for sale including most of my murex shells. Please enjoy it. (the full list withheld, was received by email, prices look OK)

I can provide images of each shell, please ask. I judge shell very hard and most of my shells are really high quality.

Looking forward to hearing from you soon. Sincerely, Don
donchan@hkucc.hku.hk

Phillip W Clover
PO Box 339, Glen Ellen CA 95442
tel/fax 707 996 6960 has provided a comprehensive price list of the many shells he currently has for sale. Prices range from US\$1.50 to US\$2300
The list will be left with our club secretary.

I have been looking for a *Tonna cerevesina* for some time now and am wondering if you could put me onto a dealer. Glen Tolman. 2331 Goodloe, Houston, Texas 77093

DIRECTORY OF CONCHOLOGISTS / MALACOLOGISTS 4th Edition 1999

LISTING IS FREE! (Edition 3 was in 1997)

Tom Rice, Editor and publisher

The fourth edition of our Directory will be published in fall 1999 (subsequent editions are planned to appear every two years thereafter) The Directory is open to beginners, advanced amateur collectors, researchers and professional malacologists or conchologists worldwide. Feel free to photocopy this form and give copies to your friends and colleagues. Mail (fax or email) the completed form or information to: Tom Rice, Editor; P.O. Box 219; Port Gamble, WA 98364 USA (Fax [360] 297-2426; email: ofseashr@sinclair.net Web Site: <http://www.ofseaandshore.com>

Please type or print clearly!

Name:

Address:

Telephone(Optional): _____ Fax: _____

e-mail: _____

Beginner; Advanced Amateur; Professional; Other:

CHECK YOUR INTERESTS: marine; freshwater; terrestrial; all mollusks; fossils; specimen exchange; information exchange; purchase; sell; photography; micro mollusks; shell art; shellcrafts; color forms; freaks; habitat studies; anatomical studies; biomolecular studies; mollusks on postage stamps; crustaceans; other invertebrates _____

snorkler; scuba; dredging; trapping; interested in shelling tours; club pins; aquaria; aquaculture. Other: _____

I am especially interested in the following **FAMILIES:** Conidae; Cypraeidae; Murcidae; Volutidae; Mitridae; Coralliophilidae; Cymatiidae (Ranellidae); Epitonidae; Fissurellidae; Marginellidae; Nassariidae; Naticidae; Nautilidae; Olividae; Patellidae; Pectinidae; Pleurotomariidae; Spondylidae; Strombidae; Tellinidae; Terebridae; Tridacnidae; Trochidae; Turbinidae; Unionidae. ALL FAMILIES.

Others _____

all Gastropoda; all Bivalvia; all Polyplacophora (chitons)

Comments or additional information:

I can correspond in the following languages:

Please notify me when the 3rd edition is published. Please send a copy of the 3rd Edition when published and include the bill: send via book post; first class mail; air mail. Please date and sign if ordering a copy