



SYDNEY SHELLER

Newsletter of the Shell Club of Sydney
NSW Branch, The Malacological Society of Australasia Limited ACN 067 894 848

Next Meeting:

28th August, Long Reef

Photographic opportunity at Long Reef followed by Meeting at adjoining rooms. Park cars near the Golf Clubhouse in free street parking, then walk along the lookout road to the Old Coast Guard building at the northern end of Long Reef Headland in Griffith Park. Wear rock platform shoes.

Time 11am, **Topic** See above.

View old newsletters and other information about our club at www.sydneyshellclub.net
Note there are often more pictures as well as larger pictures than the ones in this printed version of the newsletter.

Contributions:

Please send contributions to:

Steve Dean

PO Box 316, Mona Vale, NSW 1660

Text by disk or email only. Photos, and disks by mail, or preferably by email to steve@dean.as

If you cannot get your text onto disk, then **Karen Barnes** may be prepared to type it for you - send material to:

**1/7-9 Severn St Maroubra
NSW 2035**



Part of Maureen's unusual, diverse and interesting presentation to a group of non-shell collectors to wet their appetites.

Club Executive:

Office bearers:

President: John Franklin

Vice Pres: Maureen Anderson

Secretary: Chris Barnes

Honorary:

Raffles: Maureen Anderson

Treasurer: Peter Pienaar

Sheller Editor: Steve Dean

Librarian: John Franklin

Annual Shell Show Mgr: Steve Dean

Special Projects Mgr: John Dunkerley

Some of the topics inside:

- Presentation to Non-Collectors (Cover photo)
- Shells to swap
- COA presentation & report
- Library Needs
- Snippets from Sydney News Papers



VISITING – PERTH, WESTERN AUSTRALIA

Don't forget to call in on..

PERTH SHELL DISTRIBUTORS

SPECIMEN SEA SHELLS FOR COLLECTORS
CORALS LARGE AND SMALL
WHALES TEETH
SHARK JAWS (FULL)
GEM STONES (WORLD WIDE)
ANIMAL SKULLS & BONES

Buyer and Seller of Quality West Australian
Shells

Tel +61 8 9443 6661

Fax + 61 8 9443 6662

merv@perthshells.com

www.perthshells.com

39 DRAKE STREET
OSBORNE PARK, PERTH, WA 6017

P.O. BOX 186
MT. HAWTHORN WA 6915

Want your own copies?

Membership + Sheller, **AU\$40** /yr.
Junior Member + Sheller, **AU\$15** /yr.
Additional Family Member **AU\$5** /yr.

Includes Shellers folded & Aust. postage
(Shellers produced when there are enough articles,
maximum of 10 issues per year)

Options:

A4 envelopes non-folded, add **\$18** /yr

International postage add **\$5** /year

To subscribe send payment & details to:

Peter Pienaar
PO Box 901
Campbelltown, NSW
Australia 2560

Note: The Sydney Shell Club is a branch of
the Malacological Society of Australasia
(MSA) It is preferred that you are also a
member of the MSA. MSA membership can
be organised through Des Beechey

Des@phm.gov.au

26 Malga Ave, Roseville Chase NSW 2069

P.O Box 345
Lindfield NSW 2070

Phone/fax
02 9415 8098

books@booksofnature.com

**BOOKS
of
NATURE**

www.booksofnature.com

(a.k.a Capricornica Publications)

the latest and best shell books
books on other marine life, plants, mammals,
reptiles, orchids, gardening.
MSA journal back issues available

David Tarrant

Specimen & Commercial Shells

Retail & Wholesale

Stock includes representatives of
most families. No lists at present.

4 Gillies Close
Coffs Harbour 2450

02 6652 6104

Shells to Swap:

Collection possibly for sale:

I have a collection of shells that I am considering selling. The collection includes rare shells & some from all over the world. Many Barrier Reef specimens are in the collection including large Bailer shells all live taken etc. Many are catalogued, and shell books go with the collection to enable identification where necessary. Many of the shells were collected by me personally over a period of years. Manus Island tree snails/South African land snails/Cuban tree snails
Angel Wings from America/ Volutes, cone shells & Golden Cowrie are just some of the items in the collection.
Shells are mainly housed in pull out drawer cabinets that will go with the collection. Should any one be interested in purchasing this collection, it would be appreciated if they could email me or contact me on 07 33566145 most evenings.
Regards, Phil Power.

powphf@optusnet.com.au

Shells for sale/trade:

I have been a land shell dealer in the USA for over 20yrs. I am looking for someone who might wish to trade or sell land snails only. I trade as 'Specimen Land Shell Sales' and can be found in Tom Rice's Dealer Book. I supply many other dealers like Femorale w/ snails as well as my own business. If there is interest please contact me at juanita@localnet.com
Thank You, Steve Setzer

Wanted: Happy to buy or exchange:

Epitoniidae:

Cirsotrema kieneri tapperone - Canefri, 1876
Cirostremum translucida (Gatliff, 1906)
Dannevigena martyr - Iredale, 1936
Epitonium acaivthoplevra (Verco, 1906)
Epitonium auritum (Sowerby, 1844)
Epitonium barissum (Iredale, 1936)
Epitonium bullatum (Sowerby, 1844)
Epitonium christyi (Iredale, 1936)
Epitonium coreta (Iredale, 1936)

Epitonium fasciatum (Sowerby, 1844)
Epitonium marmoratum (Sowerby, 1844)
Epitonium neglectum (Adams & Reeve, 1855)
Epitonium parspeciosum (Iredale, 1929)
Epitonium foliaceiscalca carchedon - Iredale, 1936

Fissurellidae:

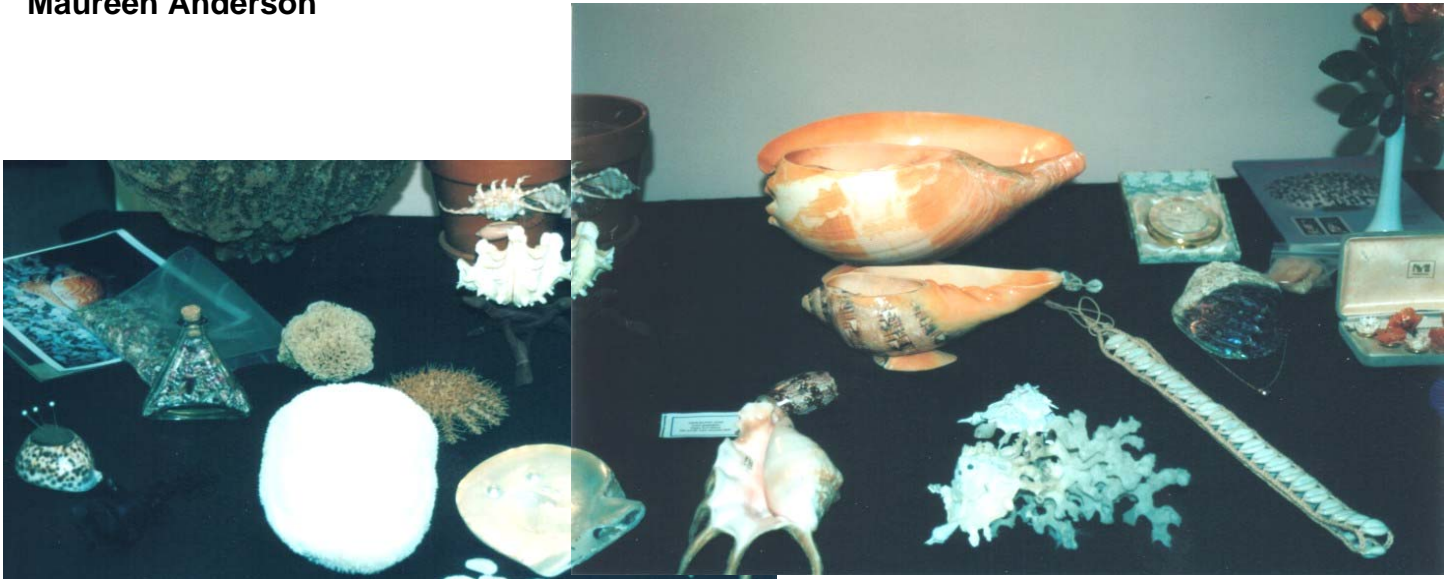
Rixa watsoni - Henn & Brazier, 1894

Phone John Franklin 9907 9828 A/H dif3@bigpond.net.au



Presentation to Country Women's Association

Maureen Anderson



Maureen was approached to give a shell talk at a private residence for the Country Women's Association on Anzac Day 2004

Rather than just talking about and showing shells she sensibly decided to cover a lot more about marine life, conservation, shell jewellery as well as shells. She talked for 1.5hrs and her audience was fascinated.

The pictures show what she displayed to compliment her talk and the unique way she displayed it.

The topics Maureen included provide some excellent ideas on what will keep the attention of the general public and capture their imagination.

Some of the diverse topics Maureen included were:

- What is a shell made of, operculum, mantle, colour, pattern, and growth.
- Less than 10% are gem and how to evaluate shell quality.
- Where to find shells, local beach shells, why you should always replace rocks when you look for shells.
- Include sponges and bryzone.
- Include carrier shells (Xenophoridae sp.)
- Other things found when looking for shells e.g. Port Jackson Shark egg case
- Poisonous cones and ***Conus geographus***
- The Barrier Reef - 30% of GBR no zone area
- Parts of our coral reef are slowly dying. Due to: Warming up of the sea due to ozone layer, effects of insecticides and herbicides that get into rivers, eg from spraying sugar cane for cane beetle, which runs into the sea. Algal blooms smother coral. Oil spills. Crown of Thorns starfish and its effect.
- Ways of cleaning, preserving and displaying shells
- Other shell uses, jewellery, Joy's Craft work

The Sydney Sheller



- Show some unusual shells eg: *Lambis lambis* & cut Baler shell, *Haliotis iris* shell with pearl
- Shell competitions, categories, her display box



- Large shells, show *Strombus goliath*



After the talk the CWA raffled a *Lambis truncata* that had been donated by Maureen. This generated almost frenzied bidding and raised \$150 for the CWA



Shell Club Minutes 24/04/2004.

The meeting was opened by P. Jansen at 2.08 pm.

Field Trips

John Franklin reported on a visit to Victor Harbour and Hindmarsh Island after the S.A Shell show. Albany, Western Australia was next, where John purchased some nice Zoila from a dealer, but added there was precious little beach drift about. Fortunately there are the Margaret River wineries and wines to enjoy.

General Business

Catherine Kindt is moving to the Gold coast Qld in the near future.

Ron reported he still had the banners from the previous SNSS, and noted the information would need to be updated.

Everyone was asked to consider possible Categories for the up coming annual shell show before the next meeting.

Boxes for the Sixth National Shell Show Sydney 2006 were also discussed.

Patty Jansen reported on Phil Colman's lab/area at Long Reef near the Golf course, used for intertidal collecting works, school groups etc and a possible future club excursion site.

*Thank you note to Coralie Griffiths for her donation toward the 2006 Sydney National Shell Show.

*Thank you note to Merv Cooper for his donation of some shells for raffle prizes.

Presentation Trevor Appleton kindly agreed to give an impromptu talk, as our scheduled speaker was unavailable. Trevor was asked to bring us up to date with the Brisbane Branch and let us know how things were going in that part of the world. Trevor described the current topic of discussion was about geographical locations, eg- South America, South Australia etc, and reported that branch meetings are not being held at the Museum due to renovations, but were still held on Tuesday night at 7:30pm, (at the TLC Building 20 Peel St, South Brisbane).

Meeting closed at 3.09pm. C Barnes, Secretary

Shell Club Minutes 22/05/2004.

The meeting was opened by P. Jansen at 2.03 pm.

Field Trips R. Moylan reported on a recent trip to the Barrier Reef. Ron encountered a number of interesting volutes while dredging and diving. Ron explained to the group that this area would be off limits to collectors at the end of June 2004.

Ron was also off to the COA annual shell show at the end of June and will not attend next months branch meeting, though he did promise to take some pictures whilst away in America.

M. Keats reported that he'd been doing a lot of bush walking and had collected a number of Meridolum species. Michael distributed the last two editions of "Waves" to the meeting.

Michael talked about the Long Bay project, December 2002 until now, acknowledging contributions from a number of the group and professionals at the Australian Museum. Michael is to approach Randwick Council for a grant to publish a paper on the work for the club.

General Business

M. Anderson talked on a presentation she had given to the Country Women's Association, on shell collecting and other environmental influences such as run off of pesticides and fertilisers affecting estuarine areas, reefs and marine habitats.

Maureen asked the group to consider donating raffle prizes and thanked P. Pienaar for his sustained contributions.

J. Franklin asked if any of the group could help stock the library, editions 1,3,5,7 &11 of the Journal were still missing.

John also distributed some past annual shell show categories and asked the group to consider sections that everyone would be interested in entering for the up coming October 2004 show.

P. Jansen reported that the steering committee for the Sixth National Shell Show Sydney 2006 had held a meeting. The Committee had begun work on a flyer for the show and had already received a few notes of interest.

Presentation A. Miskelly was unable to attend the meeting, so everyone had a cup of tea, a piece of cake and a chat much earlier than usual.

Note AGM also at next meeting. Meeting closed at 2.53pm.



The year's best [actual] news headlines of 2003:

Something Went Wrong in Jet Crash, Expert Says [no, really?]
Police Begin Campaign to Run Down Jaywalkers [now that's taking things a bit far!]
Panda Mating Fails; Veterinarian Takes Over [what a guy!]
Miners Refuse to Work after Death [good-for-nothin' lazy so-and-sos!]
Juvenile Court to Try Shooting Defendant [see if that works any better than a fair trial!]
War Dims Hope for Peace [I can see where it might have that effect!]
If Strike Isn't Settled Quickly, It May Last Awhile [you think?!]
Cold Wave Linked to Temperatures [who would have thought!]
Enfield (London) Couple Slain; Police Suspect Homicide [they may be on to something!]

Shell Club Library Corner:

On behalf of the Club we take this opportunity to thank Des Beechey and Patty Jansen for their kind assistance in the Club obtaining most previous issues of the MSA journal. However, in order to complete our collection we require the following parts:

Vol 1 No. 3, 5, 6 and 7 (1969)
Vol. 11 published 1990
Vol. 18 published as Vol. 18(1) 1996/1997

Also to complete the set of the 'Australian Shell News' we need the following:

Nos 19 to 31
Nos 34 to 36
No 48
Nos 71-94
Nos 96-97
Nos 99-102

Your gift would be greatly appreciated, however, on the other hand we would be grateful for a short loan of the above issues, which will promptly be returned.

The Librarian
Shell Club of Sydney
C/- 51 Grandview Grove
Seaforth NSW 2092

John Franklin wishes to advise that his current email address is dif3@bigpond.net.au replacing all prior addresses.

Shell Identified

Richard Willan of the NT Museum Mollusc Department provided the identification the Nassarius from Northern NSW pictured in the December issue. It is *Nassarius gaudiosus*. He also named the cone, but looking at the actual shell I am not totally convinced. I guess I should have provided better pictures, and more than one angle to aid identification. Thank you Richard for your help, it is most appreciated.

2006 National Shell Show Update.

Maureen Anderson has joined our core committee. The committee previously were Steve Dean, Patty Jansen and John Franklin We expect display categories, recommended hotels list, and other documentation to be completed over the next few months. The venue booking has been confirmed.



Short reports taken from Sydney News Papers this year.

Therefore no guarantee as to their accuracy, other than this is what Sydneysiders are being told:

The dive season was still going strong around Sydney in July because of warm water and more importantly very clear water – the best in 10 years. Winter often provides much better visibility in Sydney Harbour and along the coast because of reduced wave action, lower rainfall and less algae and plankton. This has been very much the case this year. The drought has meant virtually no rain water run off from Sydney suburbs into the waterways. As well as reducing direct pollution this has reduced the nutrients that accelerate algae growth. As a result divers are observing many unusual fish not frequently seen before.

The federal government is considering building fences around sensitive parts of the barrier reef to keep out poachers and fishermen. Queensland politicians are also calling for the government to provide permanent Naval gunboats to protect the reef.

Seahorse and other syngnathid numbers around Sydney have reduced significantly due to heavy poaching. In China Town dried sea horses are sold in large bags and are relatively inexpensive. (\$100/KG). They are sold as tonics and aphrodisiacs along with helpful instructions on how to grind and prepare them. There is also a thriving trade in live aquarium specimens even though most people are not equipped to look after them in fish tanks. From 1st of July all trade in alive or dead seahorses is now illegal in NSW with jail terms and fines up to \$55,000. Of 35 species of syngnathids, 31 live in waters around NSW.

In NSW pipis are only allowed to be collected for use as bait, so cannot be taken more than 50m from the high tide mark. Also there is a daily bag limit of 50 per person. Eating of pipis is discouraged because in NSW they sometimes contain toxic algae that is poisonous to humans. In spite of this and in spite of warning signs along six-mile beach near Gerroa (Southern NSW) it is estimated poachers took as many as 40,000 pipis from this one beach in the first three months of this year alone. Over this period NSW fisheries fined more than 100 poachers at six-mile beach, (\$50,000) and prosecuted three people caught with 5000 pipis each. Members of our club are reporting that the disappointing gossip from the South Coast is that the pillage appears to have increased to an even higher rate over recent months, but that after the newspaper article appeared the poachers seem smarter, keeping an eye out for fisheries inspectors, and promptly disappearing if the fisheries inspectors are called in.

THE TIDES

“Nae man can tether time or tide” – Burns

In reviewing the tides for the New South Wales coastline between the months of April and September 2004, it appears that this year there are not tides below 0.20m or 7.7/8” for the six month period. The best dates are as set out at right:-

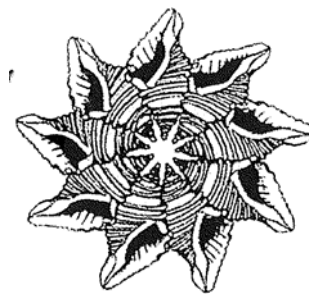
0.20M OR 7.7/8” TO 0.30M or 11 ¾”			
APRIL 2004	SUNDAY	4th	1.41PM
	MONDAY	5th	2.15PM
	TUESDAY	6th	2.52PM
	WEDNESDAY	7th	3.30PM
JUNE 2004	MONDAY	7th	6.00AM
JULY 2004	TUESDAY	6th	5.35AM
	WEDNESDAY	7th	6.25AM
AUGUST 2004	TUESDAYS	5th	5.40AM
	SUNDAY	29th	1.15PM
	MONDAY	30th	2.05PM
	TUESDAY	31st	2.54PM
SEPT 2004	WEDNESDAY	1st	3.42PM
	WEDNESDAY	15th	2.25PM
	THURSDAY	16th	3.12PM
	FRIDAY	17th	3.59PM
	MONDAY	27th	1.07PM
	TUESDAY	28th	1.55PM
WEDNESDAY	29th	2.40PM	
THURSDAY	30th	3.24PM	

For the purpose of the exercise all tides are measured at Fort Denison with tidal differences throughout the state as follows:-

LATER	EARLIER	ZERO
8 MIN JERVIS BAY/HUSKISSON	38 MIN CRONULLA	BOTANY BAY
20 MIN NELSON BAY	5 MIN LA PEROUSE	KIAMA
19 MIN NEWCASTLE	8 MIN SUSSEX INLET	ULLADULLA HARBOUR
8 MIN PORT HACKING		YAMBA
5 MIN PORT STEPHENS		
45 MIN SALAMANDER BAY		



July 2004 Meeting Presentation by Ron Moylan Summarised by John Franklin



Ron Moylan gave an interesting talk on his recent experiences at the Conchologists of America 2004 Convention at Tampa Florida, U.S.A.

The Convention was arranged on the basis that there were field trips, guest speakers and the focus was the presentation by dealers of shell material from all over the world. There were no member shell displays, competitive or otherwise. The gathering of these international dealers was referred to as a 'bourse'.

Ron considered that there was a reasonable number of species available for purchase but for some dealers, as is so often the case, the action was a little slow. Apart from the normal fund raising activities of raffles and auctions there was the running of the silent auction which attracted a great deal of attention.

How the silent auction worked as Ron explained was:- To bid, you wrote your registration number and bid on the next available line on the bid card, or simply marked your registration number beside the opening bid. You could bid as often as you wished until the auction closed."

The field trips offered to attendees at the Convention included diving in the Gulf of Mexico and a trip to Fossil Hillsborough County visiting sites rich in both Pliocene and Pleistocene Period shells. There was also a shallow water collecting trip to Tampa Bay, with bucket, bottled water and a picnic supper included.

Manatee County regulations limit live shelling to two shells of each species per person.

Another interesting activity offered was a Shell craft workshop entitled Shells – "Nature to Art". This program used shells, driftwood and other sea life found on the beach to make your own artistic composition on canvas.

Ron generously made the Convention registrant informational material available, along with photos he took at the show. Some of the seminar topics were as follows:- Shells on Coins and Stamps, Exhibiting in a Shell Show, What Judges Look For, Cataloging Shells by Computer, Lets talk About Pectens, Tips for Shell Photography: A traditional Approach Using 35mm Film and Camera, A Collection of Conchological Curiosities, The Seashells of Southwest Florida, Living Shells of Florida and the Caribbean, including Habitat, Dredging Off Southern Florida, Five Million Years of Shells on Florida 's Suncoast, The Green Mussel Invasion marches On, The Western Atlantic Rissoiinae – A Neglected, Nettlesome, and Numerous Nanofauna, Visual Vignettes of Various Volutes, Where Your Shells Came From: Let's Visit the Phillipines, Disposing of My Shell Collection, The Scaphellinae: Perplexing Problems, Questions, and a Means to an End, Some Recent Changes in the Fascioliidae, New Names for New Species and Old Friends and A Visit to Ecuador and the Galapagos.

Finally nine experts took part in the Shell Identification sessions which lasted two hours per session. In a sprit of fairness, only three specimens per person were identified during each person's turn, then they returned to the end of the line to await another opportunity. All shells submitted were accompanied by location data before they would be considered by the experts.

The Conchologists of America Inc, C.O.A. is a national body formed in 1972 and this year's Convention was jointly organised by The St Petersburg Shell Club and the Suncoast Conchologists.

Next year the 34th Annual Convention will be held, in, Punta Rassa, Florida, between 19 – 25th July 2005 and will be hosted by the Sanibel – Captiva Shell Club.

The American Conchologist is a quarterly Journal of the Conchologists of America and contact details are as follows;

Visit Conch-Net, the Conchologists of America website, at: <http://coa.acnatsci.org/conchnet/>
Subscribe to Conch-L, the COA listserver at: listserv@listserv.uga.edu – instructions on Conch-Net

Sydney Shell Club Annual Shell Show Program

Saturday

23rd October 2004

09.00 a.m. – 11.30 a.m.	Set up exhibits (11.30am close off)
11.00 a.m. – 11.20am	Guest Speaker
11.30 a.m. – 11.50 a.m.	Guest Speaker
12.00 p.m. – 12.20pm	Guest Speaker
12.30 p.m.	Luncheon – own arrangements.
Up to – 2.00pm	Judging
2.00 p.m. - 5.00pm	Exhibition Opens
5.00pm	Close



SHELL CLUB OF SYDNEY

NSW Branch of The Malacological Society of Australasia Limited ACN 067 894 848

ANNUAL SHELL SHOW

Saturday 23rd October 2004
Categories for Shell Displays / Exhibits:

No.	Category	No. of Specimens in Display	Size Range
1	Shells from one country except Australia	20 max	Any size
2	Cypraea worldwide	15 max	Any size
3	Micro Shells worldwide	20 max	Below 10mm
4	Mitridae worldwide	15 max	Above 20mm
5	Conidae worldwide	15 max	Any size
6	Ranellidae / Bursidae worldwide	15 max	Any size
7	Muricidae worldwide	12 max	Any size
8	Volutidae worldwide	12 max	Any size
9	Olividae worldwide	12 max	Any size
10	Self collected shells – Australian	20 max	Any size
11	Beached (Dead) shells any location	15 max	Any size
12	Pectindae worldwide	15 max	Any size
13	Favourite shells	10 max	Any size.
14	Shell of the show	1	Any size
15	Any shells, drawings, stamps, photographs, shell craft, the smallest, the largest, reports, etc.	Only open to junior members up to 14 years old.	

- Cost to Exhibit:** \$4.00 per entry. Junior members free to exhibit. Exhibitors may enter up to 3 entries per category. Non-entry penalty - \$5.00 per member
 - Additional sections:** If there are multiple junior entries in a given category, then we may create two sections within the category, with adults and juniors judged and awarded separately.
 - Guidelines:** The Club's Shell Show Guidelines are applicable to this Shell Show.
 - Judging:** Judging points are to be allocated as follows:-
 - 50% for quality – points will be deducted for flaws, holes, immaturity, faded colours, uncleaned, buffed or filed shells.
 - 20% for high degree of variety as appropriate to the section: eg. range of species in a family, range in size, range in locality.
 - 20% for presentation, ie. layout, attractiveness, labels.
 - 10% for labelling, ie. accuracy and completeness of information.
(Hand written labels are acceptable)
 Points will be deducted where the number of specimens specified is not adhered to.
 - Public Viewing - Visitors/non-members:** \$4.00 per person, children \$2.00 each
- Definitions:** **Australian =** endemic to and **collected in Australia**
New South Wales = endemic to and **collected in New South Wales**

For more information please contact:- **Steve DEAN, Shell Show Manager**

Email: steve@dean.as
 Post: Steve Dean, Easynet
 PO Box 316
 MONA VALE, NSW 1660